



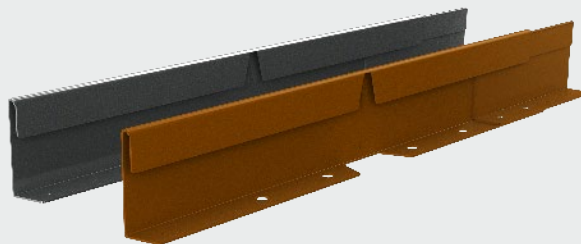
Kit Includes:

- 1 x 2200mm length with pre-attached joiner
- 3 x 300mm twisted nails

Specifications:

Length	2200mm (2285mm including Joiner)
Height	75mm
Top Thickness	8.2mm
Material Thickness	1.6mm Weathering or Galvanized Steel

OPTIONAL ACCESSORIES



Premanufactured Corner